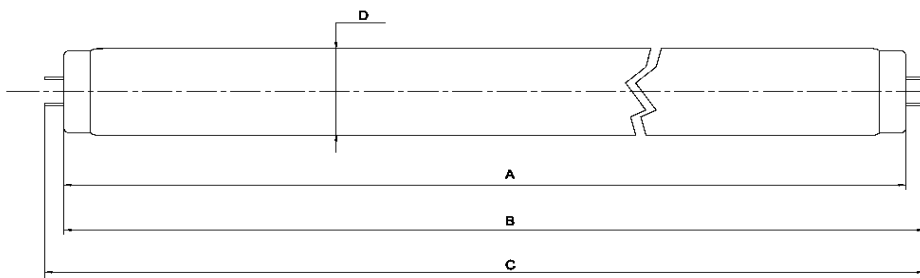


Tanning Lamp - Data Sheet

pureSunlight 1720 R 160 W

160-R-29/1,9

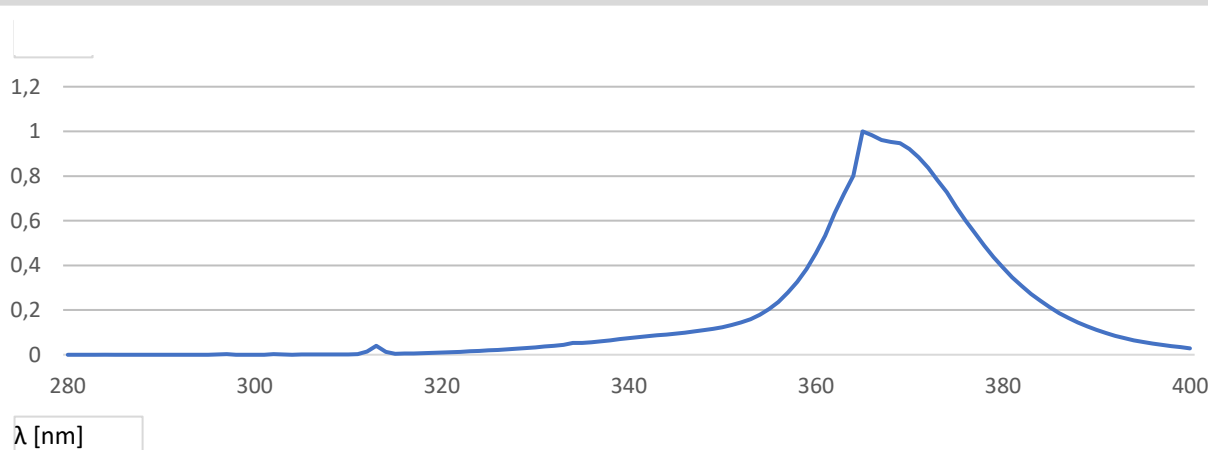
KBL part.-No. 3230074887
 Dimensions 1700 x 38 mm
 Base G13 Bi-Pin



A_{max} 1701,2 mm
 B_{max} 1708,3 mm
 C_{max} 1715,4 mm
 D_{max} 40,4 mm

SM LM

Relative Spectral Distribution



Electrical Data (nominal values)

Lamp Wattage	160 W	Lamp Voltage	100 V
Lamp Current	1,70 A	Ballast	160 W

Physical Data (nominal values)

UVA Radiation Flux	42 W	E _{er} (250-400 nm)	28,7 mW/m ²
UVB/UVA Ratio		E _{er} (320-400 nm)	13,0 mW/m ²
EUR (UVB 280-315)	0,4 %	E _{er} (250-320 nm)	15,7 mW/m ²
USA (UVB 260-320)	0,6 %	NMSC Ratio (≤320/>320nm)	1,9
		Useful life (recommended)	800 h

Recommended Exposure Times

Start Time *	3,7 min	TE*	18,0 min
Max. Time for Skin Type II*	9,1 min	TM*	49,7 min
Max. Time for Skin Type III*	12,8 min		
Max. Time for Skin Type IV*	16,4 min		

*For a typical irradiance in a bed of 480 W/m²

These results will vary depending on the size and type of bed the lamp is installed