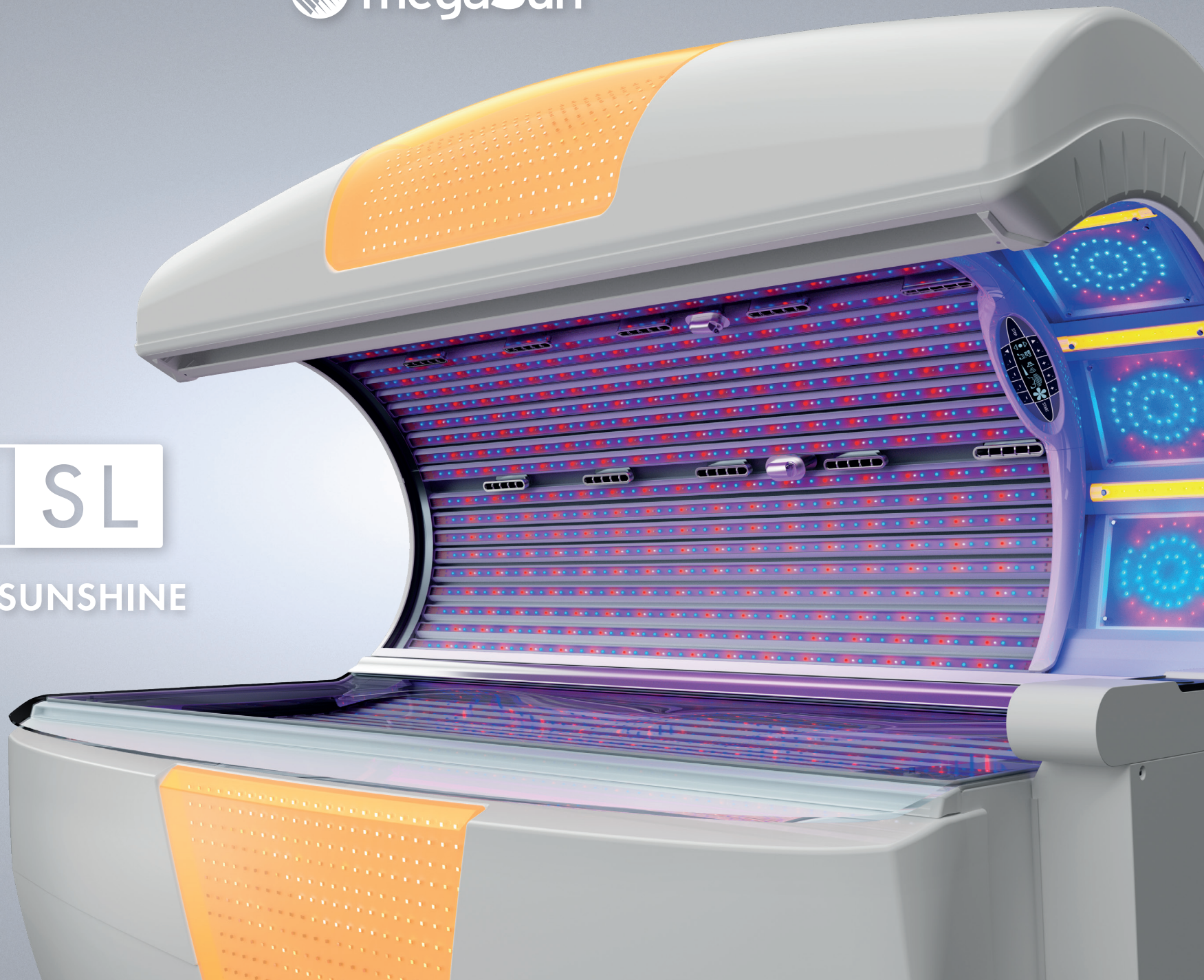




A 6 SL

UPGRADING SUNSHINE



DIMENSIONS

(Length x Width x Height in mm)

Closed 2.200 x 1.608 x 1.430

Open 2.200 x 1.445 x 1.800

Closed with Sound System L: 2.330

POWER CONSUMPTION

min. 5.6 kW / max. 6.9 kW (with air conditioning)

LED-TUBES

UVA LEDs

1628

UVB LEDs

672

Redlight LEDs

672

MATRIX LED-LIGHTSHOW*



STARTING AT 49.140 EUR



STARTING AT 44.595 EUR

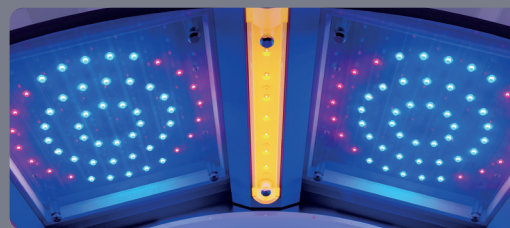
COLOR MOTION



EASY CONTROL



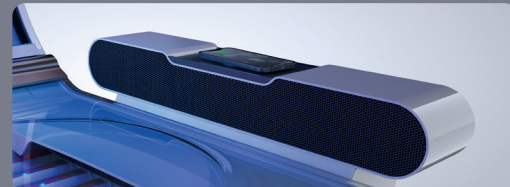
A 6 SL



LED FACIALS



COMFORT OPTIONS*



SOUND PACKAGE*



WHITE

BLACK

* optional