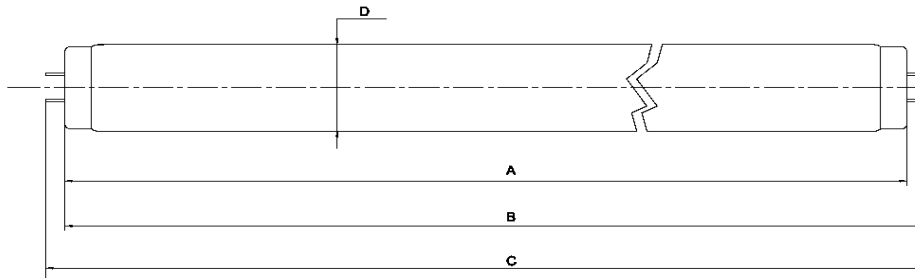


Tanning Lamp - Data Sheet

smartSunlight 1707 R 160W

160-N-30/3,2

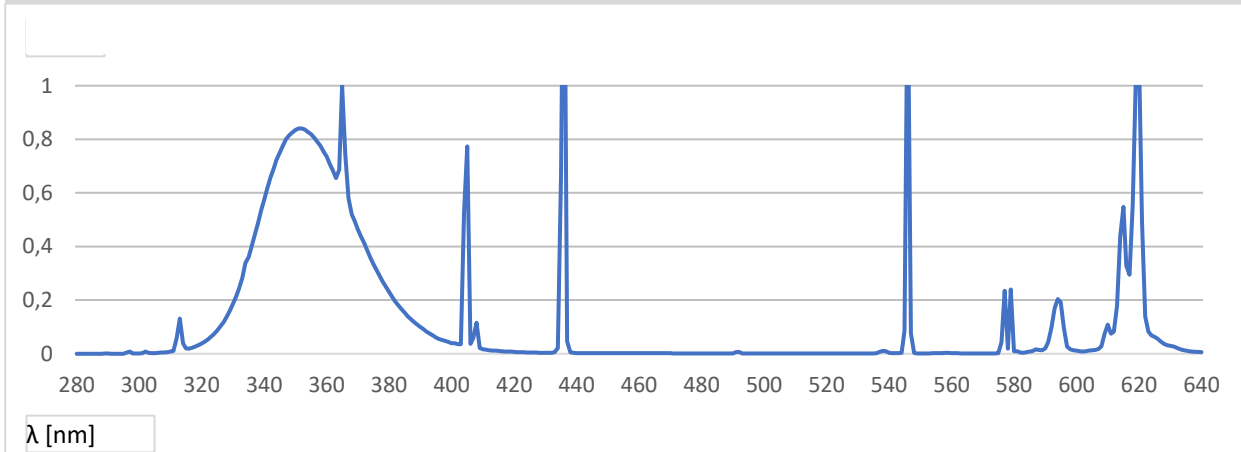
KBL part.-No. 3230076166
 Dimensions 1700 x 38 mm
 Base G13 Bi-Pin



A_{max} 1701,2 mm
 B_{max} 1708,3 mm
 C_{max} 1715,4 mm
 D_{max} 40,4 mm

SM LM

Relative Spectral Distribution



Electrical Data (nominal values)

| | | | |
|--------------|--------|--------------|-------|
| Lamp Wattage | 160 W | Lamp Voltage | 1 V |
| Lamp Current | 1,70 A | Ballast | 160 W |

Physical Data (nominal values)

| | | | |
|--------------------|-------|---------------------------|------------------------|
| UVA Radiation Flux | 25 W | Eer (250-400 nm) | 30,4 mW/m ² |
| UVB/UVA Ratio | | Eer (320-400 nm) | 10,9 mW/m ² |
| EUR (UVB 280-315) | 1,0 % | Eer (250-320 nm) | 19,6 mW/m ² |
| USA (UVB 260-320) | 1,4 % | NMSC Ratio (≤320/>320nm) | 3,2 |
| | | Useful life (recommended) | 650 h |

Recommended Exposure Times

| | | | |
|------------------------------|----------|-----|----------|
| Start Time * | 3,5 min | TE* | 16,5 min |
| Max. Time for Skin Type II* | 8,7 min | TM* | 45,9 min |
| Max. Time for Skin Type III* | 12,2 min | | |
| Max. Time for Skin Type IV* | 15,7 min | | |

*For a typical irradiance in a bed of 250 W/m²
 These results will vary depending on the size and type of bed the lamp is installed